

What is the Broads National Park?



The Broads is an amazing place of water, marshes and wildlife.
It's an internationally important wetland and one of 15 national parks in the UK.

Where is the Broads National Park?



The Broads National Park covers an area of 303km². It's the flood plain of six rivers.

- River Ant
- River Thurne
- River Bure
- River Yare
- River Chet
- River Waveney

There is also the river Wensum flowing through Norwich.

The “Broads” are shallow lakes. Most of the Broads is at sea level.

There are many rare and nationally important habitats within the Broads



Broad

**Grazing
marsh**

**Wet woodland
(carr)**

Dyke

River

Reedbed & fen

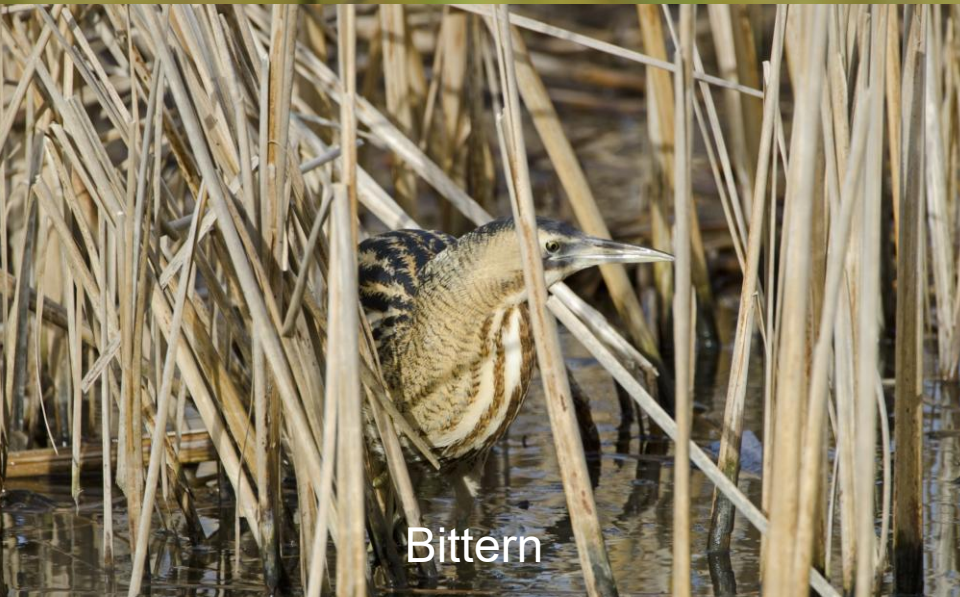
The Broads is very important for wildlife
Over 11,000 species have been recorded.
26% of the rarest species in the UK.



Swallowtails are the largest butterfly species in the UK and only found in the Broads



Norfolk Hawker
Dragonfly



Bittern



Water Vole

The Broads are rich in heritage: These are wherries. Originally Broads trading vessels, they became the first pleasure craft.



Hathor- A pleasure wherry



Albion and Maud are trading wherries with black sails.



The Broads are now a very important holiday destination with about 8 million visitors each year.



About 11,500 boats use the broads.



The Broads Authority is the organisation which looks after the Broads. It has 3 purposes.

- To conserve wildlife and heritage.
- To promote understanding and enjoyment.
- To protect navigation.



Jobs within the Broads Authority

Chief Executive Officer



Strategy

- Planning officers
- Wildlife and Ecology policy
- Access and Recreation officers
- Communications officers
- Education
- Visitor services (Centres and boat trips)
- Personnel officers
- Financial officers
- Administrative officers
- Computer support

Operational Services

- Rangers
- Construction and maintenance teams
- River Engineers
- Ecologists

The Broads Authority employs about 100 staff in Winter, and about 150 staff in Summer.



Operations Team- River dredging and Broads restoration



Construction team-maintaining land based structures and moorings.



Apprenticeships- Construction and maintenance skills



Ranger team- Assisting visitors, patrolling and protecting the waterways.



Ecology team- Managing peat fen habitats and working with landowners.



Interreg
North Sea Region
CANAPE
European Regional Development Fund



EUROPEAN UNION



Ecology team-Wildlife surveys and managing grazing animals.



Water vole surveys



Bat surveys



Invasive species monitoring

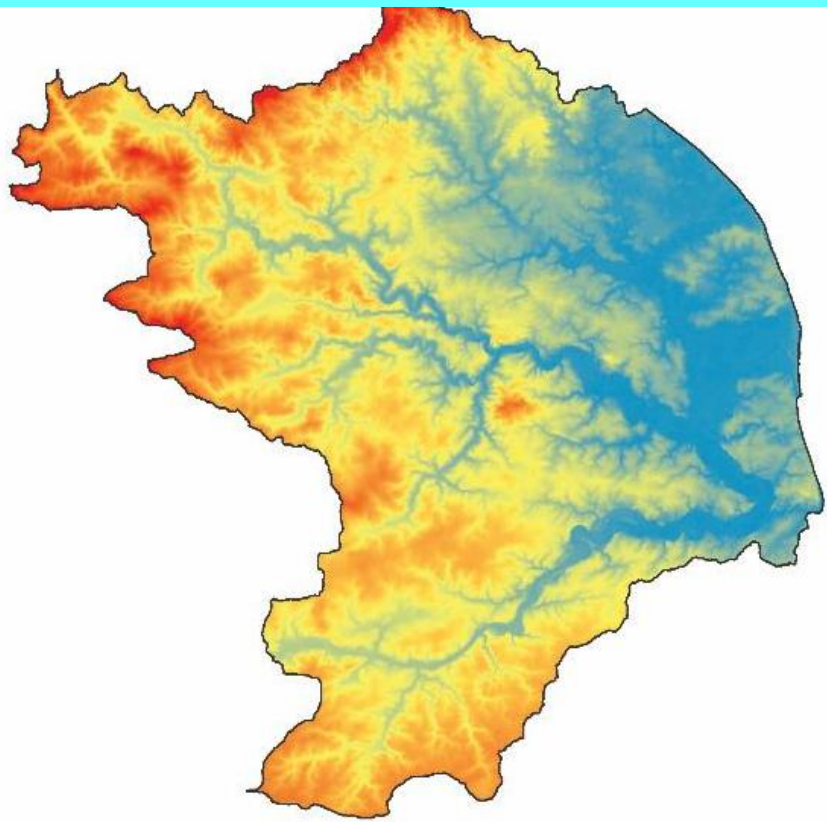


Pony grazing checks.

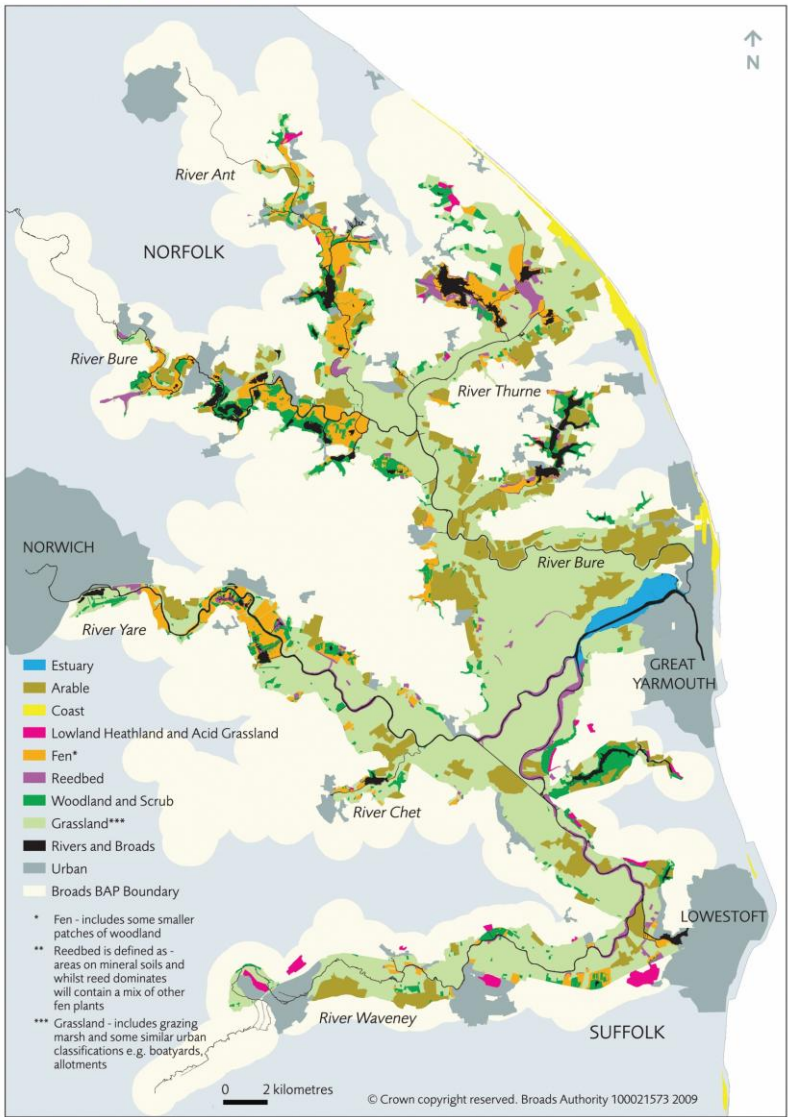
Planning and development- strategy, permissions and enforcement



Information Technology and GIS support. Mapping and surveying.



Map 1 Combined Habitats



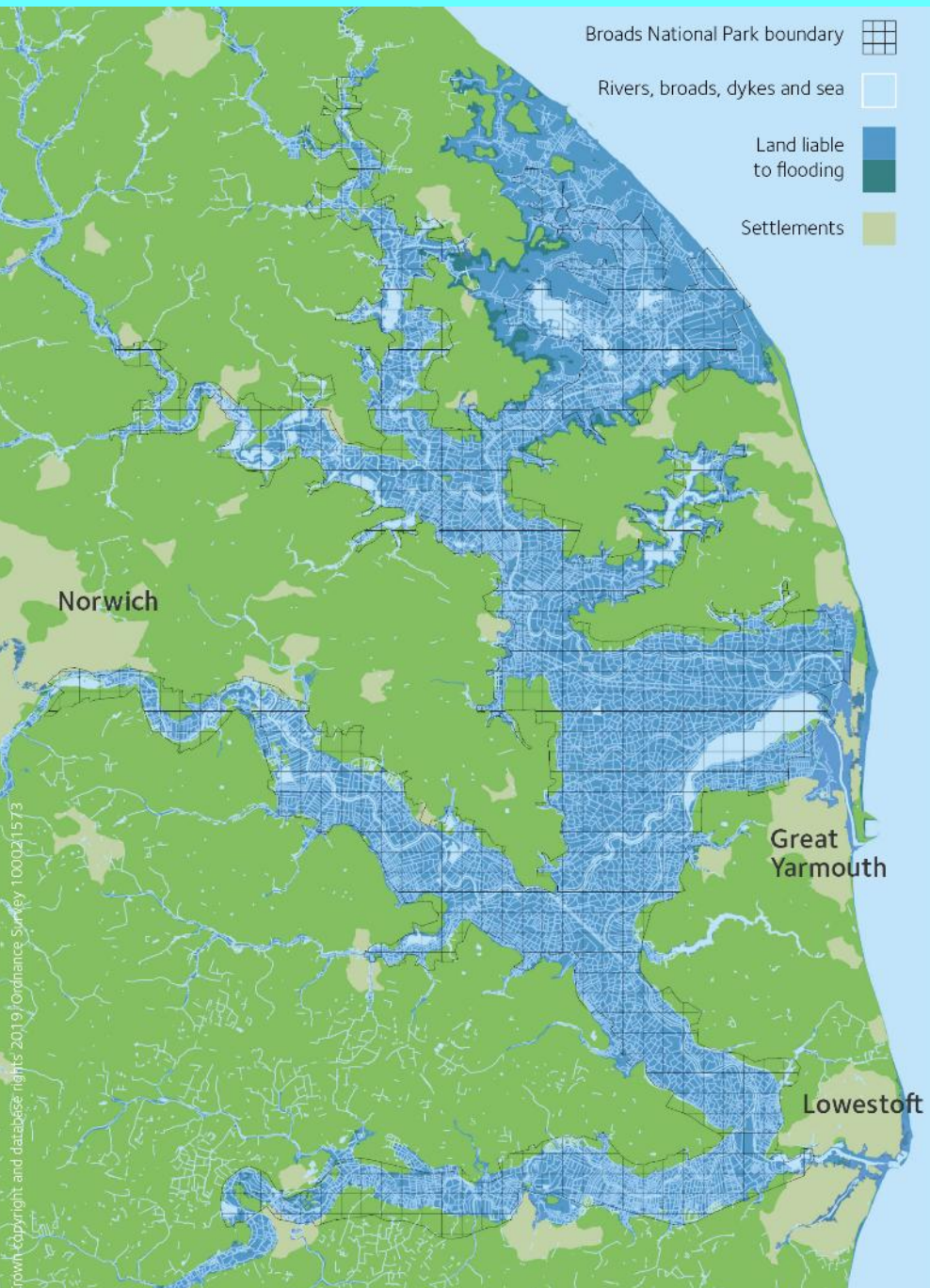
Source of the River Bure: Near Aylsham (which is 8 miles from Coltishall)



Contains OS data © Crown copyright and database right (2017)



Strategic Partnerships- Broads Futures: flood risk and climate change response.



Broadland Futures Initiative

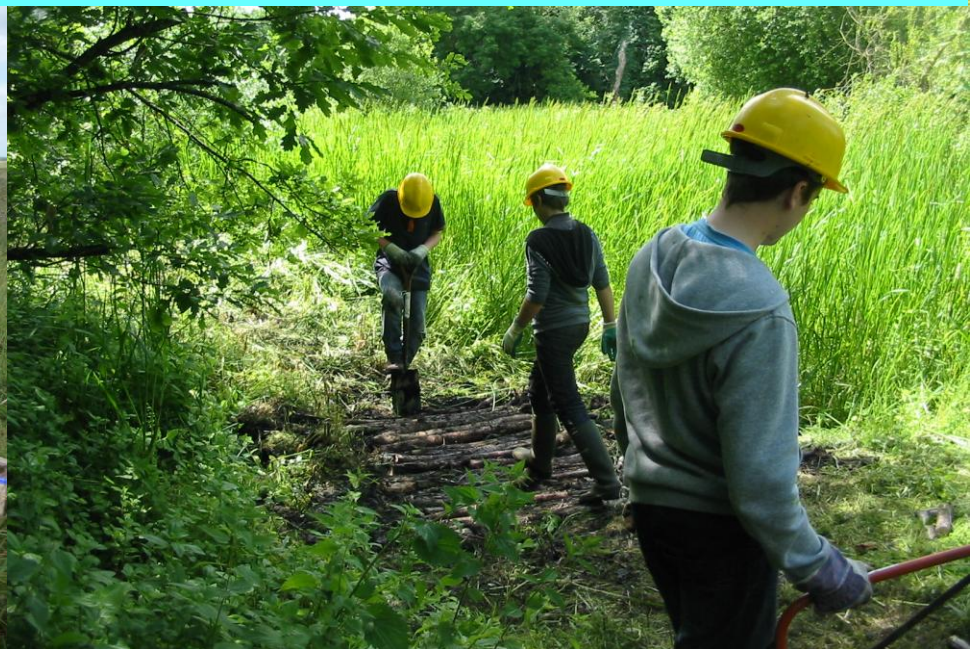


A working partnership for flood risk management in the Broadland area

Communications – Visitor services, education and graphic design.



Communications –Education and youth engagement projects .



Any Questions?

www.broads-authority.gov.uk
www.visitthebroads.co.uk



Broads
Authority